



*Thermal Management for
Outdoor and Indoor Enclosures*

sales@atisystems.co.za

011 383 8300

159 Galjoen Street, Wadeville

www.atisystems.co.za

Trade Enquiries Welcome



ATI Systems

STEGO Thermostats

FTO 011 / FTS 011 Fixed Thermostat Series



FTO 011 / FTS 011

Tamperproof (Pre-set) Thermostat FTO 011 NC / closes/ FTS 011 NO / opens on temperature rise (red/blue module housing) - for regulating heaters / fans or for switching signal devices when temperature has fallen below the minimum value.

Part No.	Description	Temperature Range	Series
01160.0-00	Fix-Thermostat (Red - NC)	Contact breaker 15°C	FTO 011
01161.0-02	Fix-Thermostat (Blue - NO)	Contact Maker 35°C	FTS 011

KTS 011 Small Compact Thermostat



KTS 011

Thermostat NO (normally open) Thermostat closes on temperature rise - for regulating filter fans and heat exchangers or for switching signal devices. Comes with blue temperature dial.

Part No.	Description	Temperature Range	Series
01141.0-00	Small, compact Thermostat	Contact Maker 0 to +60 °C	KTS 011

ETR 011 Electronic temperature regulator



ETR 011

The electronic temperature regulators are used to switch heater, cooling equipment, filterfans or signal devices on or off if the temperature value rises above or falls below an adjustable or preset reference value. The regulators must only be used in stationary, closed electric cabinets.

Part No.	Description	Voltage + Temperature Range	Series
01131.0-00	Electronic Thermostat	120V - 220V / -30°C to 60°C	ETR 011

SD 035 Electrical socket

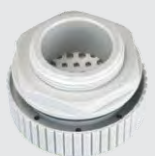


SD 035

The DIN rail mounted electrical receptacle can be quickly fitted and connected in enclosures allowing the use of auxiliary products such as hand lamps and power tools. The unit is available with and without fuse, and in many world outlet standards.

Part No.	Description	Voltage	Series
03500.0-01	Electrical German socket (without fuse)	AC 250V	SD 035

DA284 Pressure compensation device



DA 284

Pressure differentials in a hermetically sealed enclosure are a result of the heat generated by electrical and electronic components in the enclosure, as well as the fluctuation of the outside temperature. In the case of negative pressure or vacuum, for example, dust and humidity can be absorbed through the door seal and can enter the enclosure. The DA 284 Vent Plug provides a protected enclosure environment for valuable and crucial components with a UL 4X rated degree of protection. A semipermeable membrane inside the device allows air and humidity to leave the enclosure. In the opposite direction, it only allows dry air into the enclosure while not allowing humidity and dust from the outside to enter.

Part No.	Description	Series
28400.0-00	Pressure Compensation Device	DA 284



STEGO Heaters



RC

RC 016 PTC Heater

The RC 016 small heaters are designed to prevent condensation and to ensure a minimum operating temperature in small enclosures.

Part No.	Description	Voltage	Series	Heating Capacity
01609.0-00	Small semiconductor heater	AC/DC 120-240V	RC 016	10W



CS

CS 060 Touch-Safe PTC Heater 50 - 150W

The design of the heater supports the natural convection which results in high air current of warm air. The surface temperatures on the accessible side surfaces of the housing are kept down as a result of the heater design.

Part No.	Description	Voltage	Series	Heating Capacity
06000.0-00	Semiconductor Heater without thermostat	AC/DC 120-250 V	CS 060	50w
06010.0-00	Semiconductor Heater without thermostat	AC/DC 120-250 V	CS 060	100w



HGL

HGL 046 Fan Heater

Compact fan heater prevents formation of condensation. The integrated high performance axial fan provides forced air circulation and so guarantees an even temperature in enclosures. With internal terminal connector.

Part No.	Description	Voltage	Series	Heating Capacity
04640.0-00	Compact Fan Heater	AC 230 V	HGL 046	250 W
04641.0-00	Compact Fan Heater	AC 230 V	HGL 046	400 W

STEGO Panel Lights



KL 025

KL 025 Compact enclosure light

The compact KL 025 light was designed for use in industrial enclosures and control cabinets. A strong magnet allows simple and quick installation and flexibility for various mounting positions.

Part No.	Description	Voltage	Series
02500.0-07	Compact Lamp without socket	AC 230V, 50Hz,	KL 025



SL 025

SL 025 Slimline Light

Part No.	Description	Voltage	Series
02527.0-00	19" Slimline Lamp with on/off switch	Without magnet AC 230V 50Hz 11W	SL 025
02527.1-00	19" Slimline Lamp with on/off switch	With magnet AC 230V 50Hz 11W	SL 025
02527.1-10	19" Slimline Lamp with on/off switch	With magnet AC 110V 50Hz 11W	SL 025
02527.0-10	19" Slimline Lamp with on/off switch	Without magnet AC 110V 50Hz 11W	SL 025



LED 025

LED 025 - LED lamp series

The lamp series LED 025 is suitable for all types of panels and enclosures, especially where space is at a premium. The lamps have a very long service life thanks to the use of LED technology. They are available with powerful non-slip rubberized magnets allowing them to be quickly positioned in any steel enclosure. Alternatively they can be fixed mechanically. The power output allows up to 10 lamps to be connected to each other (daisy chain). Both the power input and output connectors snap lock into their sockets. With the integrated power unit and the plugs the lamp can quickly be connected.

Part No.	Description	Voltage	Series
02541.-00	LED Lamp with on/off switch	Without magnet AC 24-48VDC	LED 25
244360	Connection Cable DC complete with 2m cable		